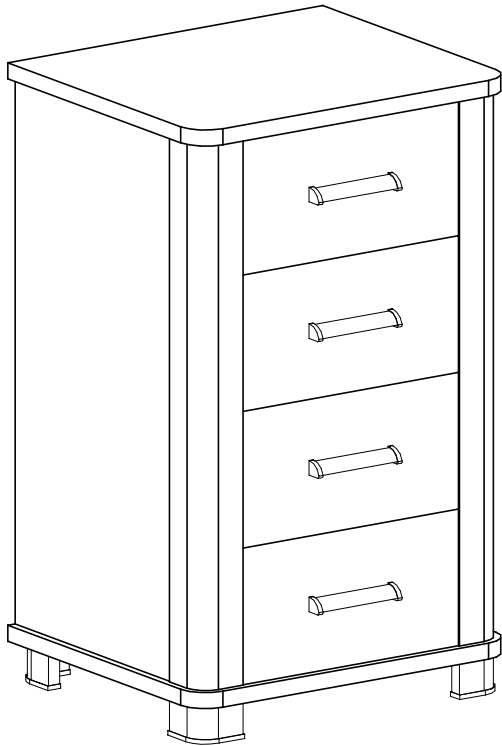


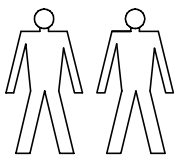
INSTRUKCJA MONTAŻU
MONTAGEANLEITUNG



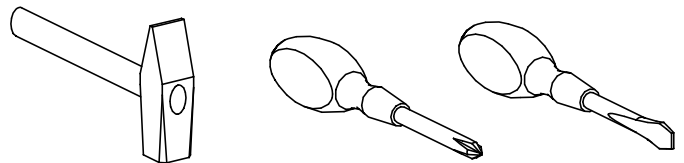
KOMODA 50

NR 3

MONTOWAĆ NA MIEKKIM PODŁOŻU TYPU: KOC, DYWAN.

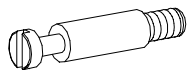


Narzędzia niezbędne do montażu (nie dostarczane przez producenta)
Zur Montage benötigte Werkzeuge (nicht vom Hersteller mitgeliefert)

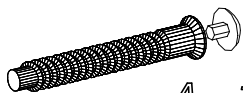


PRZED ROZPOCZĘCIEM MONTAŻU ZAPOZNAĆ SIĘ Z INSTRUKCJĄ
BITTE MONTAGEANLEITUNG BEACHTEN

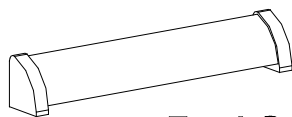
W PRZYPADKU REKLAMACJI PROSZĘ OZNACZYĆ
NUMER SERII OPISANY NA ETYKIECIE OPAKOWANIA



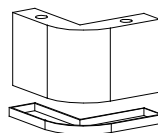
S - 16 St.



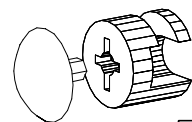
A - 12 St.
7 x 50 mm



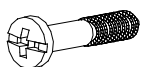
E - 4 St.



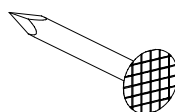
K - 4 St.



T - 16 St.



B - 8 St.



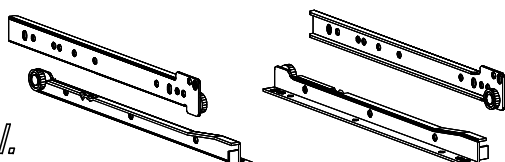
F - 70 St.



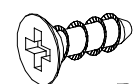
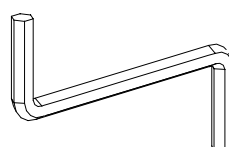
C - 24 St.
3 x 13 mm



L - 70 St.



G - 4 Kpl.



D - 16 St.
euro 5 x 13 mm